

Room-high sliding door-single-leaf

The frame made of powder-coated sheet steel or ground stainless steel can be produced individually adapted to the installation situation. The door leaf is available in laminate, powder-coated or ground stainless steel and optionally in a pre-coated

sheet steel version. The door drive box is equipped with a hinged inspection panel. Thanks to the individual design options, the door blends into the architecture of the room and thus ensures a harmonious overall appearance.

Dimensions

Clear frame width (=A)	800 - 1600 mm
Frame outer dimension	A + 100 mm
Clear inner width	A - 125 mm (with bow handle)
Frame height (=C)	max. 3000 mm
Wall thickness (=B)	standard: up to 200 mm / optional: up to 450 mm
Length of door drive box	2 x A + 250 mm

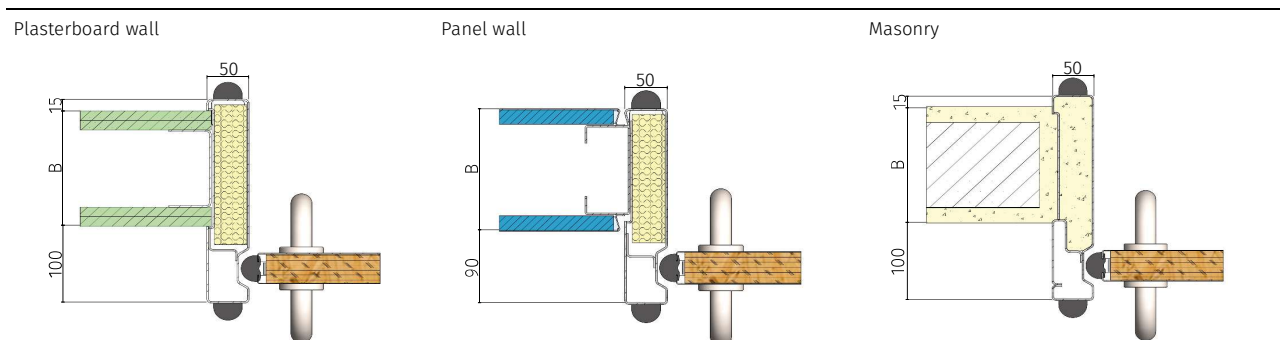
Frame

Material	standard: ground stainless steel V2A (Mat.no. 1.4301) / optional: sheet steel / both also powder-coated according to NCS or RAL colour chart
Frame type	sliding in front of the wall

Door leaf

Surface	ground stainless steel V2A (Mat.no. 1.4301) / powder-coated / laminate / pre-coated sheet steel according to NCS or RAL colour chart / covered with coloured ESG 6mm according to colour chart
Weight	standard: max. 200 kg / > 200 kg up to 300 kg as special design
Door handles	bow handle / recessed handle

Wall connections



Drive

Drive type	Dorma ES 410 automatic drive	Handrail
Operation	button in frame	manual
Door drive box	flip-up maintenance panel	flip-up maintenance panel

Special fittings

X-ray protection	Pb 0.5 - 3 mm / > 3mm as radiation protection sliding door available
Laser protection	according to DIN EN 12254:2012-04 screens for laser working places
Inspection window	rectangular: 400 x 600 mm / 600 x 600 mm / 400 x 1500 mm / round: Ø 400 mm (without blinds)
Venetian-/ roller blinds / LC glass	flush-mounted rotary switch / button, fitted by customer / optional: HT Control
Locking system	locking system with sluice function possible
Operation	frame button set / door push bar / code device / large-area button / non-contact buttons / HT Control
Door leaf core	water resistant / waterproof
Safety	according to DIN EN 16005:2013-01 Power operated pedestrian doorsets / infrared sensor bar / flat scan

Room-high sliding door-single-leaf

