

X-ray protection hinged door medium / heavy type with up to 20 mm Pb

The frame made of ground or powder-coated stainless steel can be produced individually adapted to the installation situation. The door leaf is also available in ground or powder-coated stainless steel. The hinged door can be designed to open to the right or left and is therefore suitable for all room constel-

lations. Special radiation protection hinged doors for use in rooms with extreme radiation protection requirements, such as those required in nuclear medicine, fulfil a lead equivalent value of up to 20 mm Pb.

Dimensions

Clear frame width (=A)	700 - 1200 mm
Frame outer dimension	A + 160 mm
Clear inner width	A - 50 mm depending on door leaf thickness
Frame height (=C)	2100 mm
Wall thickness (=B)	min. 150 - 250 mm optional: up to 450 mm
Door leaf width	A + 50 - 10 mm

Frame

Material	ground stainless steel V2A (Mat.no. 1.4301) optional: powder-coated stainless steel (with extra charge)
Frame type	closed frame two-part frame for retrofitting frame one-piece in metal panel

Door leaf

Surface	ground stainless steel optional: powder-coated stainless steel (with extra charge)
Lead inserts	Pb 4 - 20 mm
Weight	max. 600 kg
Door handles	automatic: bow handles on both sides

Drive

	Dorma ED 250 pushing or pulling	DICTATOR only pulling	overhead door closer
Drive type	standard drive door leaf weight up to 400 kg	drive as special version door leaf weight up to 600 kg	with / without overhead door closer
Operation	button next to door frame button in door frame (only conditionally, with extra charge)	button next to door frame	manual
Design	standard rod assembly (pushing) sliding rail (pulling)	sliding rail (pulling)	standard rod assembly (pushing) sliding rail (pulling)
Opening angle	max. 110°	max. 110°	max. 110° / max. 175°

Special fittings

Inspection window	X-ray protection glazing up to 6 mm lead equivalent value rectangular: 400 x 600 mm / 600 x 600 mm / 400 x 1500 mm round: Ø 400 mm (without blinds)
Operation	wall-mounted code device large-area button
Safety	according to DIN EN 16005:2013-01 power operated pedestrian doorsets fuse sensor BEA Flatscan

X-ray protection hinged door medium type with Dorma drive

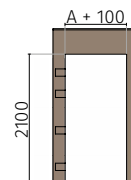
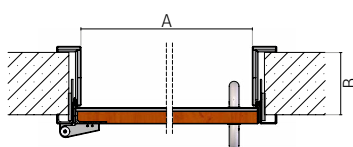
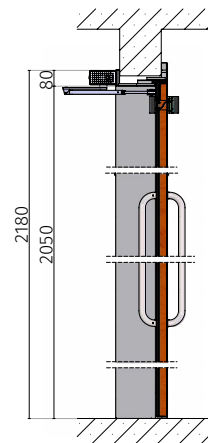
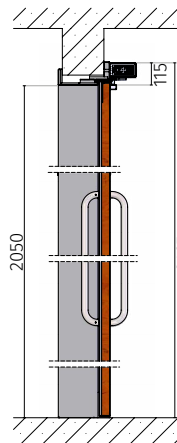
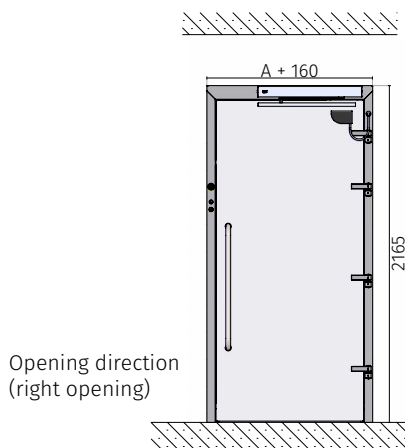
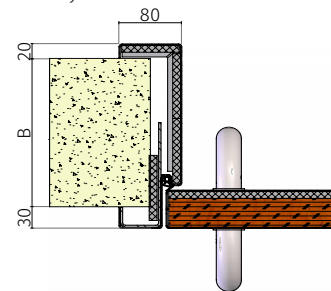
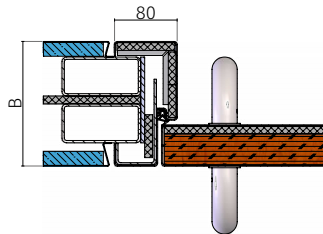
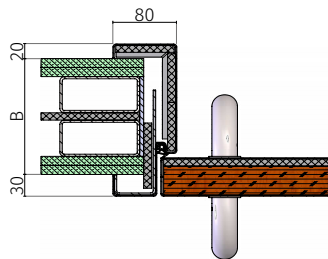


Wall connections

Plasterboard wall

Panel wall

Masonry

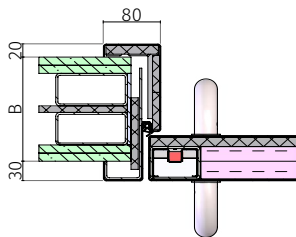


Heavy duty x-ray protection hinged door with Dorma drive

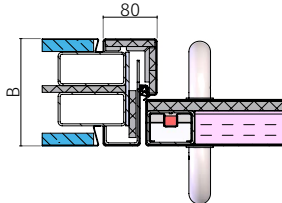


Wall connections

Plasterboard wall



Panel wall



Masonry

