

Glass panel wall facing formwork fire protection EI30

The facing layer in glass is installed as a non-load-bearing inner wall in front of the existing wall. The construction is carried out with single panels in modular design with a joint width of approx. 7 mm. The construction of the facing layer allows for

subsequent dismantling and reassembly of each individual panel in order to carry out later installations or installation modifications as well as repair work with minimum effort.

Dimensions

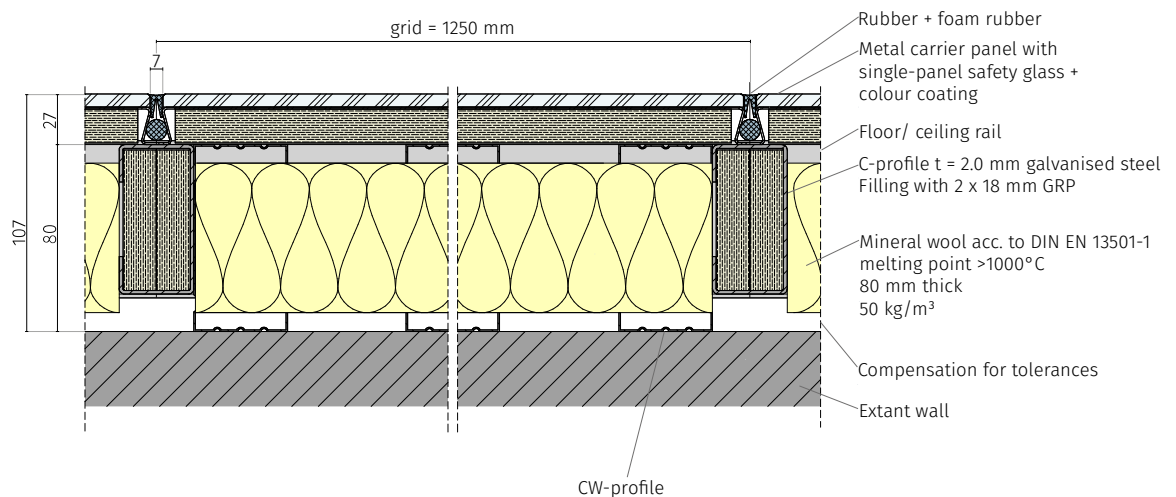
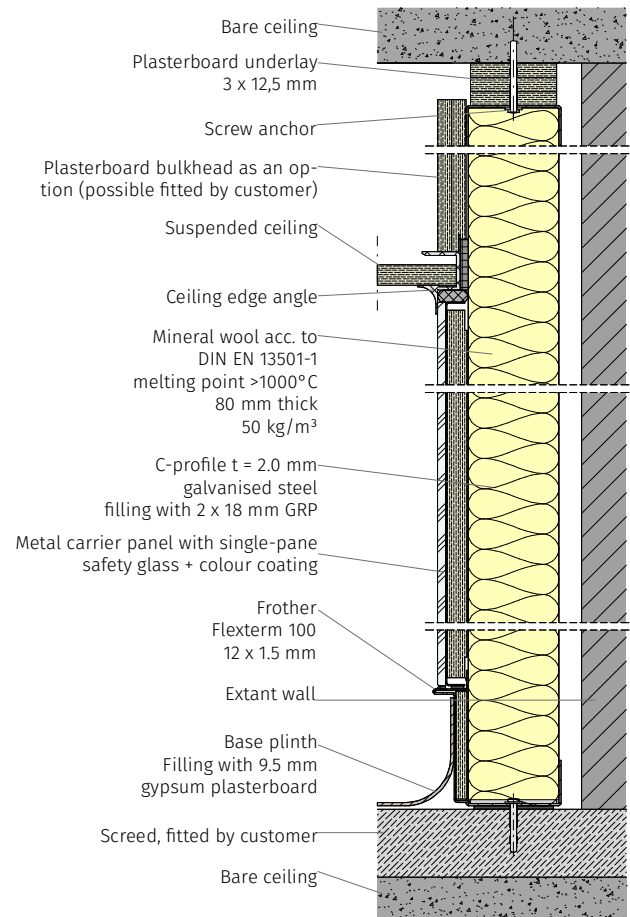
Clear room height	max. 3000 mm
Panel width	max. 1250 mm
Facing formwork	from 107 mm thickness
Joint width	approx. 7 mm
Panel height	to the suspended ceiling
Base plinth height	100 mm
Fire Protection	EI30 geprüft nach EN 1363-1

Wall covering

Wall panel	approx. 27 mm thick, consisting of 6 mm single-pane safety glass + colour coating + carrier panel of sheet steel / stainless steel
Colour	single-pane safety glass; colour according to colour chart
Base plinth	1.5 mm stainless steel with raised PVC floor covering; Filling with 9.5 mm gypsum plasterboard
Ceiling edge angle	white like RAL 9016 powder-coated extruded aluminium profile
Joint profile	silicone profile

Special fittings; supplementary items

X-ray protection	0.5 - 2 mm lead inserts glued to the rear of the fire resistant gypsum plaster board
------------------	--



Installation

Preparations

Occupational health and safety	Please observe the accident prevention regulations of the respective country.
Checking the dimensions	Before you proceed to the actual installation of the wall panels, make sure that the dimensions of the substructure are according to the plan. Any deviations may be within a tolerance range of max. 1 mm and must be taken into account later for a uniform installation pattern.
Cleaning the work area	Make sure that the work area is clean and free of obstacles before installing the panels. Thoroughly vacuum the substructure. Always consider the hygienic requirements that will be demanded of the premises in the future! Remove all dirt from the base plinths and door frames to ensure maximum adhesion of the self-adhesive sealing tapes.
Sealing tapes	Glue the sealing tape onto all horizontal surfaces of the base plinths and door frames with a recess of 5 mm to the room-side edge.

Installation panel

Corner panel	When installing the glass panels, start with a corner panel. Consider the dimensional deviations that may have occurred beforehand. Always use aids that make work easier, such as suction handles, pulleys, suction cranes, etc. Clamp a backfill cord into the ceiling edge angle profile so that the following wall panel and the ceiling edge angle are decoupled from each other. Lift the panel to its desired position. The panel is first threaded behind the ceiling edge angle profile at the top. Then place the panel on the base profile. Use 3 mm spacers between the panel and the base plinth to ensure an even joint pattern. Press the panel fully against the columns of the substructure and fix it to the columns using its tabs. Use 2.9 x 13 mm self-tapping metal screws. Ensure that the corner profile is mounted in perfect alignment, as all subsequent panels will be aligned with it.
Wall panel	Starting from the corner panel, the simple wall panels are aligned vertically one after the other using 6 mm spacers. If wall heating systems or various pipes for connections etc. are to be provided, these must be installed beforehand. Please see techsheet "Wall heating" for detailed installation instructions. A maximum tolerance of ± 2 mm is acceptable. For the distances to the base plinth you need 3 mm spacers. First fix the panel in position with only a few screws. In this way you can quickly compensate for dimensional deviations. Only when all glass wall panels have been brought into the desired position you can screw all the brackets tight.
Wall panel above doors	If it is a panel above hinged doors, it can be mounted directly. If there is a sliding door, you must cut the wall panel on the side of the inlet frame. The inlet frame was screwed directly to the substructure and would therefore collide with the wall panel. Take the exact measurement in height and width and add a joint dimension of at least 5 mm. Now cut out the wall panel in the size of the resulting dimension. To fix the metal panel, proceed as described above.
Joints	A backfill cord and joint rubber is inserted in all vertically running joints. Cut the joint rubber and the backfill cord to the length of the joint and place the backfill cord in the rubber. Press both into the joint. If necessary, seal horizontal joints with a suitable sealant and then smooth the joint with a joint smoother.

Installation tools

Preparations

Checking the dimensions	Plan documents Cross line laser Measuring tape
Cleaning the work area	Broom and dustpan Vacuum cleaner incl. filter
Sealing tapes	Cutter knives Scissors Folding rule

Installation panel

Corner panel	Spacer 3 - 7 mm Suction handles, vacuum lifting crane, pulley block Drilling machine incl. metal drill set Impact wrench incl. bit set Cordless screwdriver incl. charger, batteries and bit set Insulation knife
Wall panel	Cross line laser Folding rule Spirit level 1800 mm Clamp Suction handles, vacuum lifting crane, pulley block Drilling machine incl. metal drill set Countersink (metal) Impact wrench incl. bit set Cordless screwdriver incl. charger, batteries and bit set Insulation knife
Wall panel above doors	Cross line laser Folding rule Spirit level 1800 mm Angle Metal file Angle grinder incl. PPE, cutting disc (metal), scrubbing disc (metal) Clamp Suction handles, vacuum lifting crane, pulley block Drilling machine incl. metal drill set Countersink (metal) Impact wrench incl. bit set Cordless screwdriver incl. charger, batteries and bit set Insulation knife
Joints	Folding rule Cutter knives Scissors Sealant gun

Cleaning

Pay attention to your personal protective equipment PPE. For cleaning work it is recommended to wear disposable gloves resistant to cleaning agents and disinfectants. Wipe cleaning with VAH-

ted detergents and disinfectants according to the hygiene plan, dosage according to manufacturer's instructions

Cleaning recommendations

Product	Cleaning task	Interval
Corner panel	Remove all impurities; wet cleaning and disinfection of the surface	1 x monthly
Wall panel	Remove all impurities; wet cleaning and disinfection of the surface	1 x monthly
Joints	Remove all impurities; wet cleaning and disinfection of the surface	1 x monthly

Cleaning protocol

Position	Product	Date	Trained personnel

Position	Product	Date	Trained personnel

Disassembly

Pay attention to your personal protective equipment PPE. Wearing a helmet or protective cap is generally recommended when working overhead. Safety shoes min. S2 with safety cap are also required.

Disassembly

Joints	Remove the joint rubber and the backfill cord from the joint. Make sure that the joint rubber does not tear. Use a sealant removal tool to remove joints sealed with sealant.
Wall panel	Attach the suction handles or the vacuum lifting crane to the panel. Remove the screw connection. Work from bottom to top. Remove the wall panel from its position. To do this, first lift it off the skirting board. Then you can thread the panel from the ceiling edge angle. Remove the backfill cord from the ceiling edge angle profile.
Wall panel above doors	Proceed as above ("wall panel").
Corner panel	Proceed as above ("wall panel").

Disassembly tools

Disassembly

Joins	Cutter knife Scissors Folding rule Sealant removal tool
Wall panel	Clamp Suction handles, vacuum lifting crane, pulley block Drilling machine incl. metal drill Cordless screwdriver incl. charger, batteries and bit set
Wall panel above doors	See above ("wall panel").
Corner panel	See above ("wall panel").

Spare parts

Test Method

The right position of each wall panel has to be checked according to the production and assembly planning. The right fit of the joint rubber has to be controlled. The surface of the wall panel has to

be inspected for possible damages, such as dents and scratches, and the intact condition has to be ensured.

Protocol

	Date	Check
		✓
		✓
		✓
		✓
		✓

Notes

In the following you can document customer-specific requirements, wishes and changes.

Position	Description	Date

Position	Description	Date

Position	Description	Date

Position	Description	Date

Position	Description	Date